

Pioneer Group LLC

Sheikh Zayed Road, 5th Floor, Aspin Commercial Towers, Dubai, United Arab Emirates



DEVELOPING GLOBAL
INFRASTRUCTURE TO POSITIVELY
INFLUENCE SUSTAINABLE SOCIAL
AND ECONOMIC GROWTH

PIONEER GROUP LLC
GLOBAL TURNKEY CIVIL ENGINEERING SOLUTIONS

Engineering Expertise:

- Mining
- Ports
- Rail
- Roads
- Airports
- Power
- Healthcare
- Housing
- Rural Schools & Colleges



“EPCF” TURNKEY PROJECT SERVICES



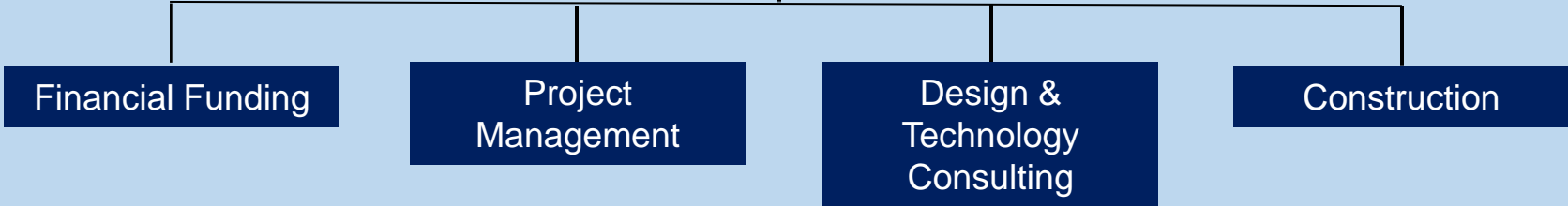
The “**EPCF**” Turnkey Model provides the following:

- “**Engineering**” – In-house employment of Geological Investigation Services, Professional Civil, Mechanical, Hydraulic and Electrical Engineering & Quantity Surveying Services,
- “**Procurement**” – The acquisition of “right-fit” technologies, methodologies, materials & human resources required to deliver the complete works
- “**Construction**” – The delivery of a high standard product, at a competitive price, on time
- “**Funding**” – Through “G-to-G” negotiations, our Strategic Financial Affiliates can offer and support the customized package which best fits our Clientele requirements

GROUP STRUCTURE OF “EPC+F” SERVICES



Pioneer Group LLC



OPEN CAST MINING



Our capabilities are:

A. MINE SITE CONSTRUCTION & DEVELOPMENT:

- Site infrastructure development
- Tailings facility construction
- Site civils works

B. CONTRACT MINING:

- Open pit mine design, planning and optimization
- Drill and blast
- Load and haul
- Rehabilitation and closure

C. MATERIALS HANDLING:

- Raw material and product handling
- Crushing, screening and processing
- Stockpile and dump management



OPEN CAST MINING



12.5.2015



**EXISTING OPEN CAST MINING
OPERATIONS**

Google earth



Our capabilities are:

A. PORT DESIGN & CONSTRUCTION:

- Port infrastructure development on multi-product logistics
- Breakwater design
- Structural & mechanical
- Construction

B. MATERIALS HANDLING:

- Storage yards
- Quayside to ship loading

C. OPERATIONS:

- Complete port administration
- Logistics planning – 'In & Out'
- Dredging
- Stockpile and dump management
- EIA compliancy





Our capabilities are:

A. RAIL DESIGN & CONSTRUCTION:

- Mine-To-Port infrastructure development, design, construction & management
- Fuel storage
- Line communications
- Construction

B. MATERIALS HANDLING:

- Quayside storage yard management
- Multi-product haulage

C. OPERATIONS:

- Complete rail administration
- Logistics planning – 'Load & Offload'





Our capabilities are:

A. ROAD DESIGN & CONSTRUCTION:

- Mine-To-Port infrastructure development, design, construction & management
- Structural works
- Technology alternative design
- Construction

B. MAINTENANCE:

- Stormwater management & general housekeeping
- Road surface maintenance



STRUCTURAL CIVIL ENGINEERING



Our capabilities are:

A. TURNKEY DESIGN & CONSTRUCT:

- Materials Ports
- Road/Rail bridges
- Dams & Hydro-electric
- Concrete & Steel Structures



Road/Rail Bridge Construction



Hydro-Electric Power Projects



Our capabilities are:

A. AIRPORT DESIGN & CONSTRUCTION:

- Greenfield or rehabilitation development, design, construction & management of airstrips & airports
- Structural works
- Technology alternative design to runway layerworks designs
- Construction

B. MAINTENANCE:

- Stormwater management & general housekeeping
- Administration & terminal maintenance





Our capabilities are:

A. DESIGN & CONSTRUCTION:

- Greenfield development, design, construction & management of hydro-electric & solar energy plants
- Cutting edge technologies providing sustainable power supplies utilizing regional climatic conditions
- Construction of plants & power grid infrastructure

B. OPERATING:

- The employment & training of staff required to operate the facilities
- Administration of operations



HEALTHCARE



Our capabilities are:

A. HEALTHCARE DESIGN & CONSTRUCTION:

- Greenfield or rehabilitation development, design, construction & management of hospitals
- Implementation of rural network of fixed & mobile clinics
- Healthcare training academies





Our capabilities are:

A. DESIGN CONSIDERATIONS:

- **Affordability:** Housing and transport are considered affordable if they require less than 45% of household budgets.
- **Accessibility:** Household's ability to access important services and activities, and therefore their transportation
- **Dynamic ("Responsive") Planning:** This refers to communities' ability to respond to changing demands

B. ARCHITECTURAL DESIGN & CONSTRUCTION:

- Fit-for-purpose architectural designs utilizing materials, methodologies & labour skills which will promote sustainability
- Town planning which includes complete infrastructure development (waste-water & potable water management, power, roads infrastructure etc.)



RURAL SCHOOL DEVELOPMENT



Our capabilities are:

A. TURNKEY DESIGN & CONSTRUCT:

- Rural schools & colleges of education
- Infrastructure development:
 - Waste-water & potable water
 - Power
 - Roads
 - Sports facilities
 - Community halls
 - Nutritional feeding kitchens





Pioneer pride itself in approaching engineering challenges and adapting new cutting-edge technologies to solve those challenges. For example, in the road construction sector, Pioneer have signed a Strategic Alliance Agreement with Polyroads, the founder and manufacturer of patented SRM's. This allows Pioneer to, through the application of Soil Science, construct roads through any terrain and soil type i.e., the dune sands of Saudi Arabia notorious for their single sized 'dead' soils to the 'Black Cotton' soils found in floodplains around the world which are ridiculously high in clay content. This technology gives Pioneer the ability to treat insitu materials previously classified as poor and change the soils science and composition to meet world standards and specifications.

“SOILTECH Mk III” ROAD STABILIZERS



Polymer-Based Soil Stabilizers

- State of the art polymer stabilizing technology is applied to new or existing gravel roads capable of single axle loads of > 300t
- All-weather unsurfaced gravel roads benefitting from uninterrupted 24/7 use
- Improved quality of road & drive ability reduces operating costs, tyre wear & tear whilst improving driver safety
- Technology is used on insitu materials which reduces the need to import specified materials from borrow or commercial source
- 30% reduction in construction costs & 50% reduction in construction time & 300% extended longevity
- Up to 97.6% saving on CO₂ emissions impacting on the environment





Polymer-Based Cold-Rolled Premix Surfacing

- Technology provides a semi-flexible highly resistant surface which will not shrink, crack, shear or bleed
- Price competitive due to lower establishment costs
- Cost effective as a result of minimal aggregate challenges, particularly in outlying regions where material procurement is challenged
- Nano-polymer technology provides all-weather ride ability promoting driver safety & longevity
- Environmentally sustainable





CONCRETE EQUIPMENT	
CONCRETE BATCHER	3
CONCRETE MIXER	6
CONCRETE PUMP	3
SPINNER ADT	2
SPINNER TRUCK	4
DUMPER	6
GROUTING STATION	2
TOTAL	26

EARTHWORKS EQUIPMENT	
ADT	55
DOZER	25
EXCAVATOR	40
FRONT END LOADER	12
ROLLER	37
GRADER	28
GRID ROLLER	6
SKIDSTEER	8
TIPPER	45
TLB	21
WATER TANKER	36
WATER TANKDER ADT	34
TOTAL	347

SPECIALIST EQUIPMENT	
ASPHALT PLANT	4
ASPHALT FEEDER	4
CRANE	6
CRUSHER	4
DRILL RIG	22
LOWBED / TRUCK	19
PAVER	6
PNEUMATIC ROLLER	8
RECYCLER	6
TOTAL	79

VEHICLES	
CRANE TRUCK	22
DIESEL BOWSER	8
SERVICE TRUCK	8
LDV	42
TOTAL	80

HEAVY PLANT & EQUIPMENT RESOURCES



FOUNDING MEMBERS



Mr. M.R.A. Gharafory
(Chairman)



Eng. C.R. Dann
(CEO)



Dr. P.R. Du Toit
(Chief Operations Officer)



Pioneer Group LLC

www.pioneerholdingsllc.com



Dr. Mukhlis (UAE)
(Master Planner)
Schuster Pechtold

Mr. Graham (Aus)
(Mine/Port/Rail Design)

Mr. Nick (SA)
(Smart Road Materials)

Mr. Sarel (SA)
(Structural Engineering)

Mr. Johard (SA)
(Legal Team Lead)

Roux Attorneys : www.rouxattorneys.trade

Schuster Pechtold:
www.shusterpechtold.com

WBHO : www.wbho.co.za

Ceenex Consulting Engineers : www.ceenex.com

Polyroads : www.polyroads.com

Teichmann : www.teichmanngrp.com

WOT : www.wotrack.co.za

JG Afrika : www.jgafrika.com

GA Group : www.gautengasphalt.za.co

“ A global presence with the tradition of excellence ”

REGISTRATION CERTIFICATES



شهادة تسجيل Commercial License

License Details / تفاصيل	
License No.	958469
Company Name	PIONEER GROUP L.L.C
Trade Name	PIONEER GROUP L.L.C
Legal Type	Limited Liability Company(LLC)
Expiry Date	07/06/2023
D&B D-U-N-S	0
Registered No.	1573627

License Members / أفراد	
Share / حصة	Role / دور
	Manager / مدير
Nationality / جنسية	South Africa / جنوب أفريقيا
Name / اسم	MAHOMED RAFIEK AHMED GHARAFORY
ID No.	947046

License Activities / أنشطة	
Investment in Commercial Enterprises & Management	
Address / عنوان	
Phone No.	971-50-7506561
Fax No.	
Mobile No.	
Email / بريد إلكتروني: r.taha@rakez.com	
Remarks / ملاحظات	

Print Date: 13/06/2022 18:17 Receipt No.: 14440516

Get FREE access to Zoho One for the first 30 days. Scan the QR code to activate.

This is a certified e-document issued without signature by the department of Economy and Tourism. Kindly Scan the QR Code to Verify the certificate.



شهادة تسجيل العضوية Membership Certificate

License no.	958469
Membership no.	363642
Registration no.	1573627
Trade Name	PIONEER GROUP L.L.C
Legal Status	Limited Liability Company(LLC)
Activity	Investment in Commercial Enterprises & Management
Member Since	08/06/2021
Date of Issue	08/06/2021
Expiry Date	07/06/2023

Remarks

This certificate shall be invalid in case of any alteration without chamber's authorization.

For online verification of this Certificate, please visit our website <http://www.dubaichamber.ae/verify>

معرفة تجارة وصناعة دبي
Dubai Chamber of Commerce & Industry

ماتف: 4 2280000 (+971) | 800 CHAMBER (800 248237) | ب.ص. 1457 - دبي، الإمارات العربية المتحدة
فاكس: 4 2211648 (-971) | customerservice@dubaichamber.ae | www.dubaichamber.ae

الملاحظات

تعتبر هذه الشهادة لاغية في حال أي تغيير عليها دون إجماع ذلك من الغرفة.

للتأكد من صحة بيانات الشهادة يرجى الرجوع إلى موقع الغرفة <http://www.dubaichamber.ae/verify>

Contact Details:

- Website: www.pioneerholdingsllc.com
- Mr. M.R.A Gharafory (Chairman)
 - International Mobile: +27 72 786 5538
 - Email: Rafiek@pioneerholdingsllc.com
- Eng. C. R. Dann (Chief Executive Officer)
 - International Mobile: +27 83 375 9033
 - Email: Charles@pioneerholdingsllc.com
- Dr. P.R. Du Toit (Executive Director)
 - International Mobile: +27 82 557 5264
 - Email: philip@pioneerholdingsllc.com

Pioneer Group LLC

Sheikh Zayed Road, 5th Floor, Aspin Commercial Towers
Dubai, United Arab Emirates

Registration Number: 1573627

